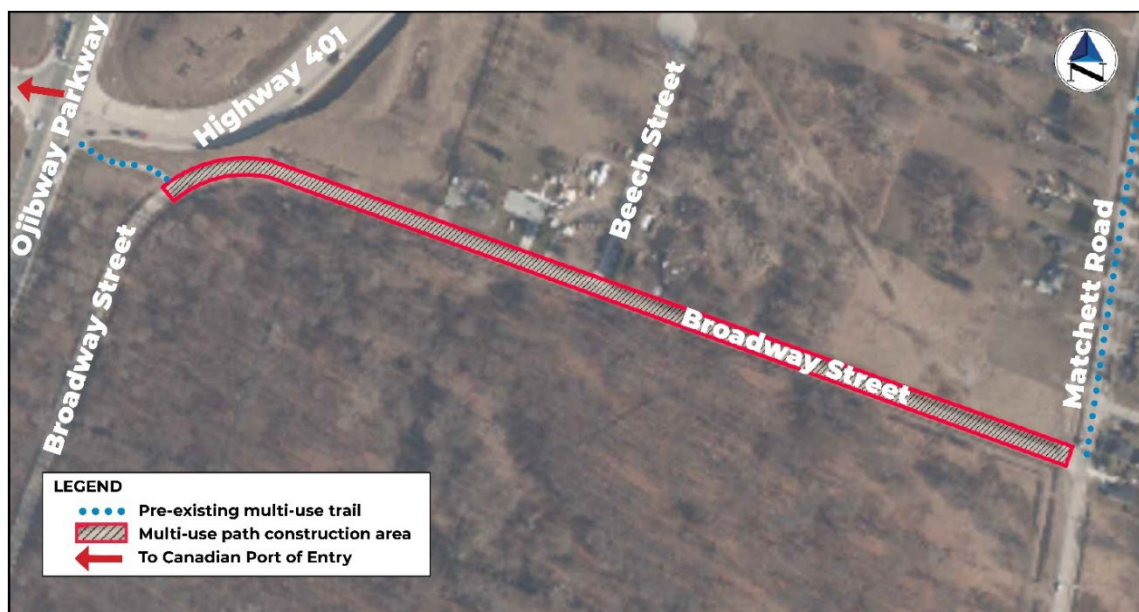


The Gordie Howe International Bridge project includes a dedicated multi-use path that will accommodate pedestrians and cyclists across the Windsor-Detroit border. Once complete, the multi-use path on the Gordie Howe International Bridge will provide safe connections to local trail networks in both Windsor and Detroit, including the Iron Belle Trail, Great Lakes Way and Joe Louis Greenway in Detroit, and a connection between from the Canadian Port of Entry to Malden Park, which links into the Rt. Hon. Herb Gray Parkway Trail, Chrysler Canada Greenway and the Great Lakes Waterfront Trail/Trans Canada Trail in Windsor.

BROADWAY STREET MULTI-USE PATH

The new Broadway Street multi-use path will further enhance local and regional cycling networks by creating a new cycling and pedestrian connection from the corner of Broadway Street and Ojibway Parkway to the corner of Broadway Street and Matchett Road, where it will connect to the existing City of Windsor multi-use trail along Matchett Road. The Broadway Street path will be located on the north side of the road along the right of way, connecting into the Canadian Port of Entry via an existing Ministry of Transportation Ontario (MTO) trail. When complete it will provide a connection between Ojibway Parkway and Malden Park, where users can access the Rt. Hon. Herb Gray Parkway Trail.

The Broadway Street multi-use path is funded by the project Community Benefits Plan. Initiatives identified in the plan were based on community consultation undertaken between 2015 and 2018 where investment into active transportation infrastructure was strongly supported. In addition to the Broadway Street multi-use path, a trailhead at Malden Park will also be constructed providing multi-use path users with a safe parking option and meeting point near the Gordie Howe International Bridge.



BROADWAY STREET MULTI-USE PATH AND MALDEN PARK TRAILHEAD CONSTRUCTION

Construction on the Broadway Street multi-use path and Malden Park trailhead is currently underway and will take approximately six weeks to complete.

Construction is taking place between the hours of 7 a.m. and 7 p.m. and will include:

- Construction of an asphalt multi-use path on the north side of Broadway Street.
- Creation of a trailhead at Malden Park, adjacent to the Matchett Road parking lot, including benches, wayfinding signage and garbage cans.
- Infill of the existing ditch on the north side of Broadway Street and construction of a new swale adjacent to the new multi-use path for stormwater drainage, including installation of catch basins and culverts.
- Relocation of hydrants and hydro poles as needed.
- Installation of wayfinding signage and two benches along the pathway.
- Enwin will install streetlights along existing pole infrastructure on Broadway Street to enhance safety for multi-use path users.

Once complete, the multi-use path will become part of the municipal trail network and will be owned and maintained by the City of Windsor.







BROADWAY STREET MULTI-USE PATH DESIGN

The Broadway Street multi-use path will meet Accessibility for Ontarians with Disabilities Act (AODA) requirements and will be approximately three metres wide. The asphalt path will be separated from vehicular traffic by a buffer including road markings and rumble strips, where space permits.

The multi-use path design includes wayfinding signage and relocation of existing hydrants and hydro poles, as required. It also includes a swale, storm culverts and catch basins along the multi-use path to facilitate drainage. Enwin will add new street lighting to existing hydro poles along the path. Once complete, the multi-use path along Broadway Street will be owned and maintained by the City of Windsor.

Design details are below:

Legend:

	SWALE
	STORM SEWER
	REMOVALS
	STORM CULVERT
	RUMBLE STRIPS
	STORM CATCHBASIN

Broadway Street connection to Ojibway Parkway

This section begins at the existing MTO trail from Ojibway Parkway to Broadway Street. It includes a smooth connection into the existing trail, removal and installation of new storm culverts, installation of storm catch basins, swales and rumble strips.

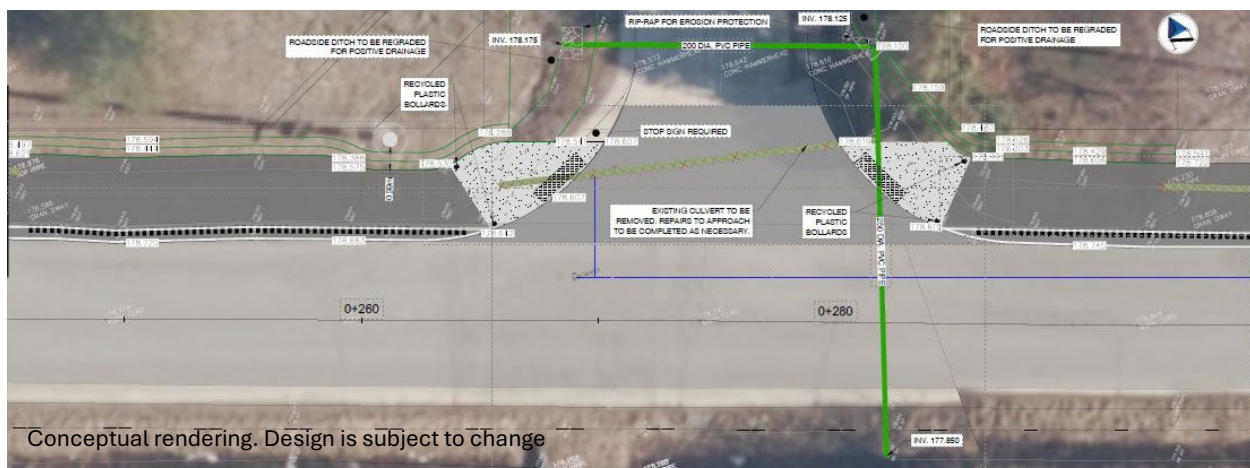


Map showing connection with existing MTO Ojibway Parkway trail.

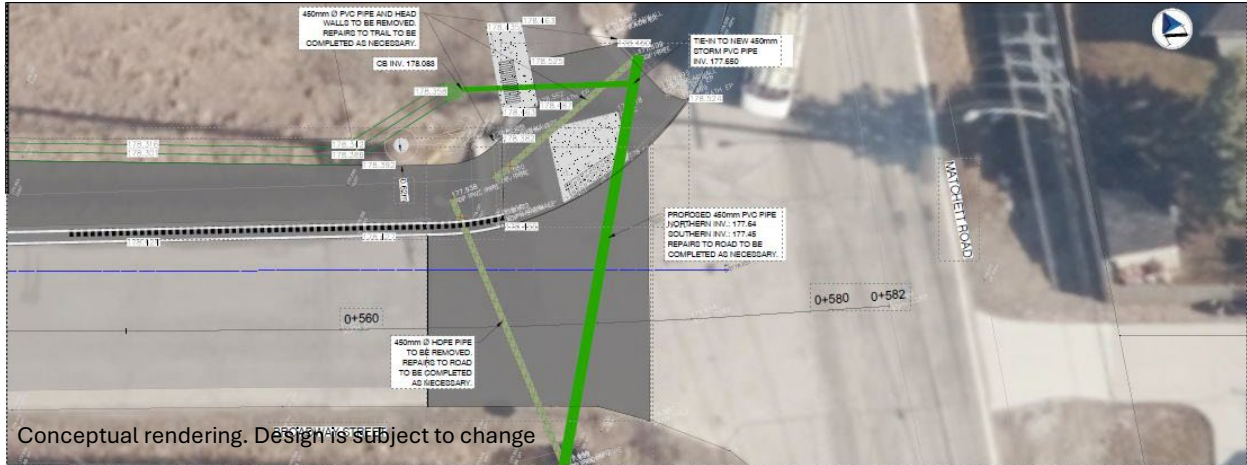
Broadway Street to Beech Avenue and Matchett Road

The multi-use path will intersect with Beech Street and includes sidewalk tie-ins and repairs to the approach way. Recycled plastic bollards and tactile strips will be installed at the intersection of Broadway Street and Beech Street.

The multi-use path will connect into Matchett Road, including removal and repairs to the road approach at this intersection, sidewalk tie ins, addition of tactile strips, a new bench and connection into the City of Windsor Matchett Road multi-use trail.



Map showing intersection with Beech Street.



Map showing connection with Matchett Road.

MALDEN PARK TRAILHEAD DESIGN

The Malden Park Trailhead will be installed at the Matchett Road entrance to Malden Park and will include benches, garbage receptacles and wayfinding signage. The trailhead will be near one of the park's public parking lots and Transit Windsor bus stops.

The trailhead sign will AODA compliant and align with City of Windsor design guidelines.



The project team is committed to limiting impacts to nearby residents and businesses during construction and will keep the community informed as the construction plans are finalized.

For more information about the Sandwich Street reconstruction work and the Gordie Howe International Bridge project visit GordieHoweInternationalBridge.com or call 1-844-322-1773. Follow us on X at x.com/GordieHoweBrg, like us on Facebook at facebook.com/GordieHoweBridge and connect with us on LinkedIn at linkedin.com/company/wdba-apwd.