

Meet the Contractor



Thank you for joining us.

Please be sure to mute your microphone.

We will begin shortly!



Bridging North America

Local Canadian Vendor Summit – October 29, 2020

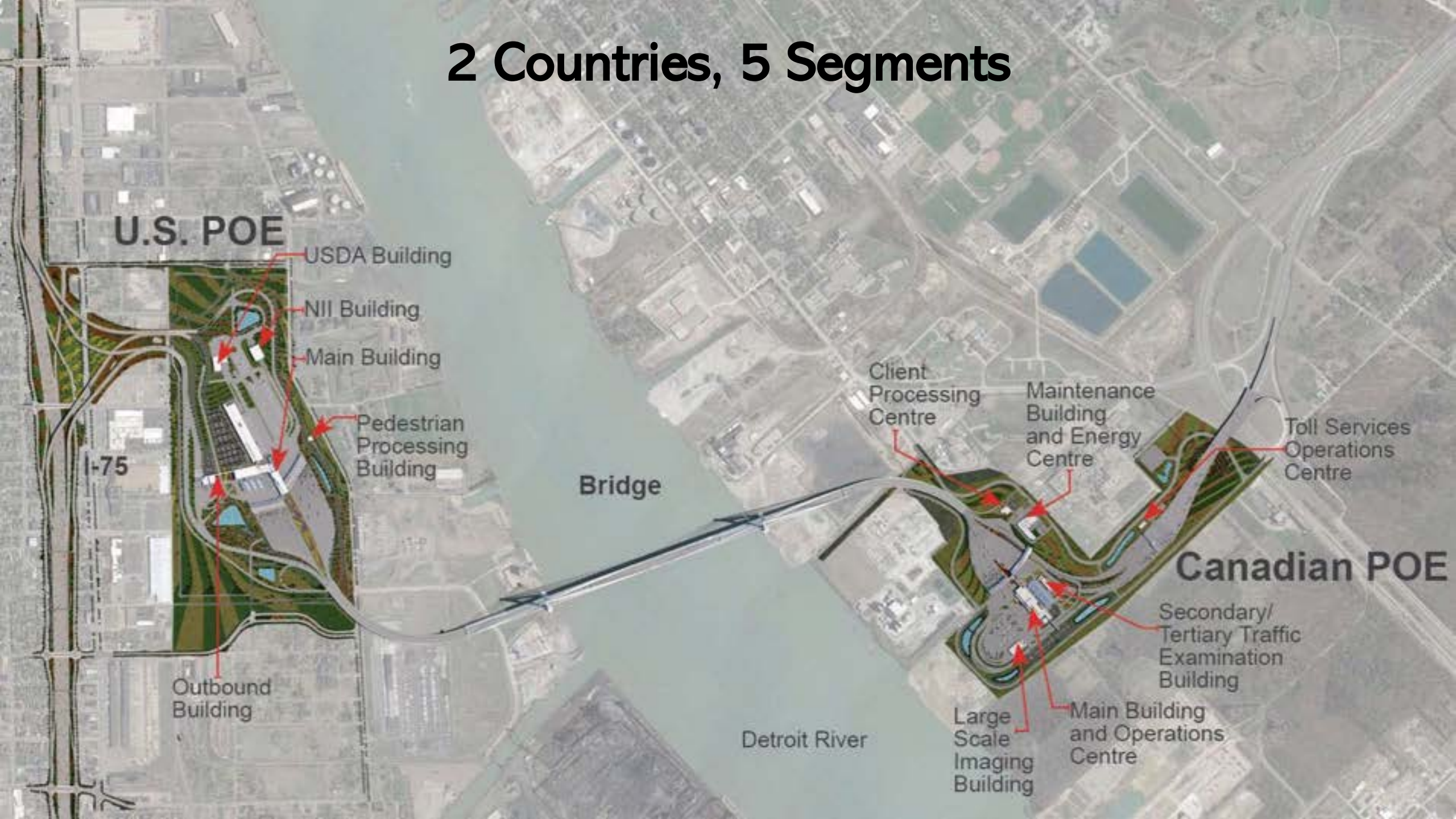


An aerial photograph of a large cable-stayed bridge with two prominent white pylons. The bridge spans a wide body of water. In the foreground, there is a large, modern building complex with several interconnected structures and extensive parking lots. The surrounding area includes green spaces, roads, and other infrastructure. The overall scene is captured in a slightly desaturated, blue-toned aesthetic.

Welcome and Introduction



2 Countries, 5 Segments



U.S. POE

USDA Building

NII Building

Main Building

Pedestrian Processing Building

I-75

Outbound Building

Bridge

Detroit River

Client Processing Centre

Maintenance Building and Energy Centre

Toll Services Operations Centre

Canadian POE

Secondary/Tertiary Traffic Examination Building

Large Scale Imaging Building

Main Building and Operations Centre



Health & Safety





Project Update



Progress on Site: Canadian Bridge



- ▶ Currently in preparation for the Lift 3 concrete pour, the rebar and template work on both the north and south pile cap is underway.
- ▶ BNA placed 608 cubic meters of concrete in the north pile cap for Lift-2 and are preparing the back span footings for rebar and form work activities.

Progress on Site: Canadian Port of Entry



- ▶ The CAN POE has already achieved a significant milestone by installing the last wick drain on site; roughly 120,000 wicks totaling more than 2.5 million linear meters of wicks were installed over the CAN POE site.
- ▶ Surcharge operations continue across the site.
- ▶ Sandwich Street archaeological and subsurface utility engineering investigations are ongoing.
- ▶ Fencing installation continues across the north end of the POE.



BNA Procurement





BNA Procurement

Current Work Packages can be found at:

<https://www.gordiehoweinternationalbridge.com/en/procurement-opportunities>

To request a package and NDA, contact: procurement@bnacagp.com



Canadian Port of Entry Buildings Subcontractor

Tier 1: Vollmer Inc.





Vollmer Inc.

- Premier Construction & Service Provider in Ontario
- Serving the Industrial, Commercial, and Institutional markets
- Electrical, Sheet Metal, Millwright/Rigging, Data Communications, HVAC, Mechanical, Electrical Technical, High Voltage
- 24/7 365 Emergency Service
- 75,000 sq. ft. fabrication facility

Work We Are Self-Performing for the Canadian POE

- Mechanical
- Plumbing & Piping
- HVAC
- Sheet Metal
- Electrical
- Data Communications
- Pipe & Duct Insulation

Future Opportunities

Our major equipment buy-out will kick into high gear November 2020.

To register your vendor profile please send company info and/or product line card along with your contact information to vollmer@vollmer.ca





Canadian Port of Entry Subcontractor

Tier 1: Sterling Ridge



Sterling Ridge Infrastructure Inc. Canadian POE scope outline

Engineered Fill & Surcharge Project

- Sterling Ridge Infrastructure Inc. “SRI” has been awarded the Engineering Fill and Surcharge Package for the Gordie Howe International Bridge from Bridging North America.
- The main scope is to supply and install more than 850,000 metric tonnes of aggregate material.
- In addition to the aggregate material, instrumentation devices for monitoring the settlement and ground water pressure have been installed and are part of the scope of work.



Sterling Ridge Infrastructure Inc. Canadian POE scope outline

Concrete Works Project

- Sterling Ridge Infrastructure Inc. “SRI” has been awarded the Concrete Works Package for the Gordie Howe International Bridge from Bridging North America “BNA”, anticipated to begin in November 2020.
- The main scope consists of earthworks, fill / backfill, waterproofing / insulation, formworks / falseworks, reinforcing steel and cast in place concrete for 12 buildings, bridges, tunnels and canopies in the Canadian Point of Entry.



Our Resources in the Windsor-Essex Region

- ▶ Operating Offices in Windsor and Leamington
- ▶ 150 pieces of owned late model heavy construction equipment
- ▶ 24 tractors
- ▶ 75 heavy equipment operators/28 heavy tractor trailer drivers
- ▶ 150+ Labourers employed at peak season
- ▶ 25 experienced Project Managers
- ▶ 5 management staff with engineering background
- ▶ 30 office administration staff
- ▶ Member of the LiUNA (Labourers), IW (Iron Workers), IUOE (Operating Engineers) and IBEW (Electricians)

All resources required to build a quality project, on time, on budget.

We will self-perform all major construction activities.



**STERLING
RIDGE
GROUP INC.**

How to connect with Sterling Ridge

- ❖ Sterling Ridge Group Inc., 6260 Westar Drive, LaSalle ON N9J-0B5
- ❖ Telephone: 519-978-3111
- ❖ Facsimile: 519-978-1119
- ❖ <https://www.sterlingridgegroup.com>
- ❖ info@sterlingridgegroup.com
- ❖ <https://www.linkedin.com/company/sterlingridgegroupinc>



**STERLING
RIDGE**
GROUP INC.

The experience and resources across our group allow us the creativity to pass along significant financial savings.

STRONGER TOGETHER



**STERLING
RIDGE**
GROUP INC.



Thank you!



We will end this main session, and you can proceed to your breakout rooms.